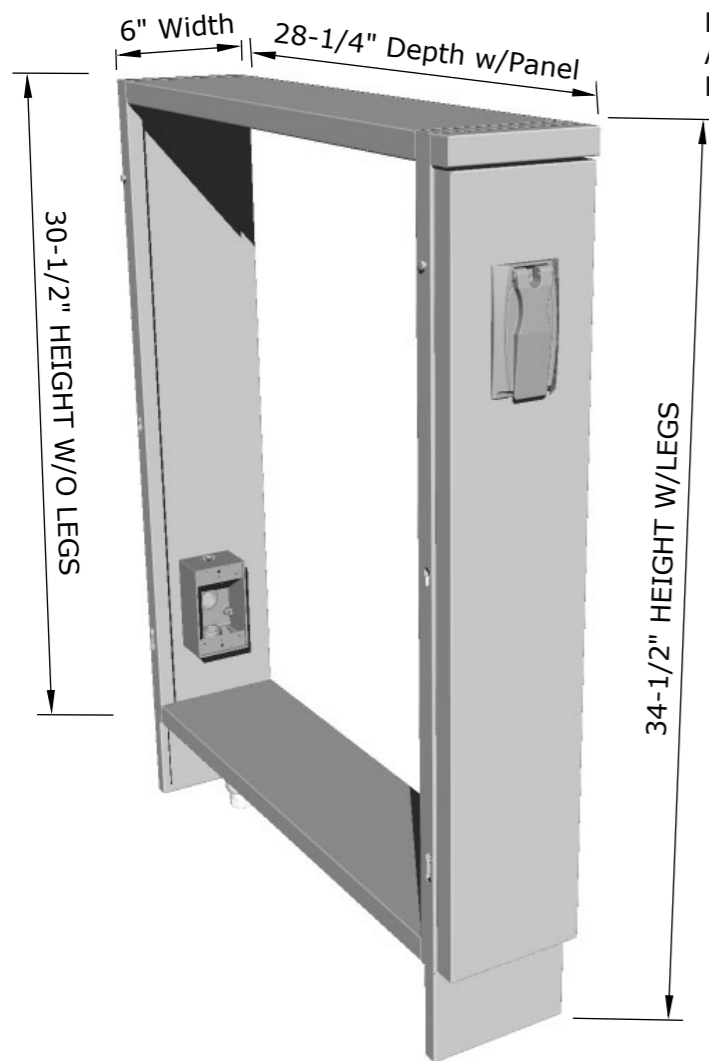


## Product Dimensions



## Product Components

REMOVABLE 1" - COUNTER RAIL  
ALLOWS COUNTER TO BE EITHER  
BULLNOSE OR BEVEL EDGE

OUTSIDE ELECTRICAL  
COVER FOR SWITCH  
OR OUTLET

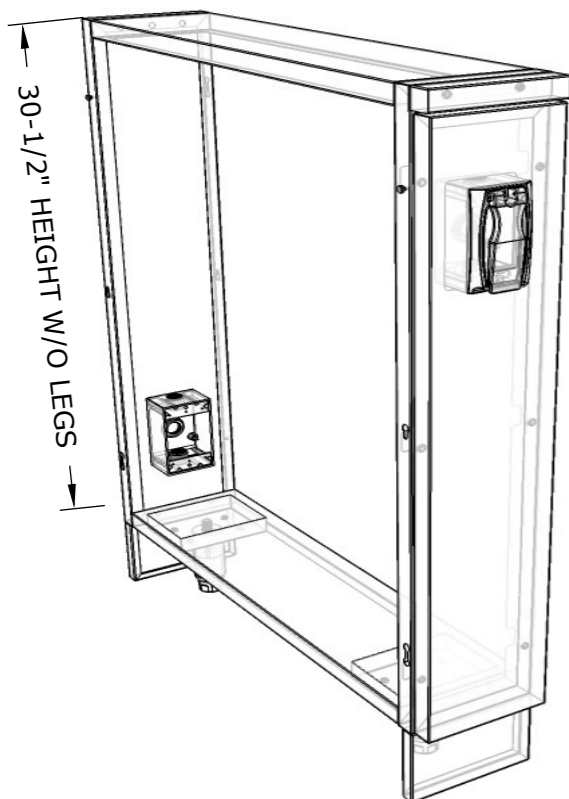
1-GANG  
ELECTRICAL BOX

KICK PLATE

GREAT NEXT TO THE APPLIANCE  
GRILL CABINET, PROVIDES ELECTRICAL  
POWER FOR ROTISSERIE MOTOR &  
INTERIOR GRILL LIGHTS

## Product Diagrams

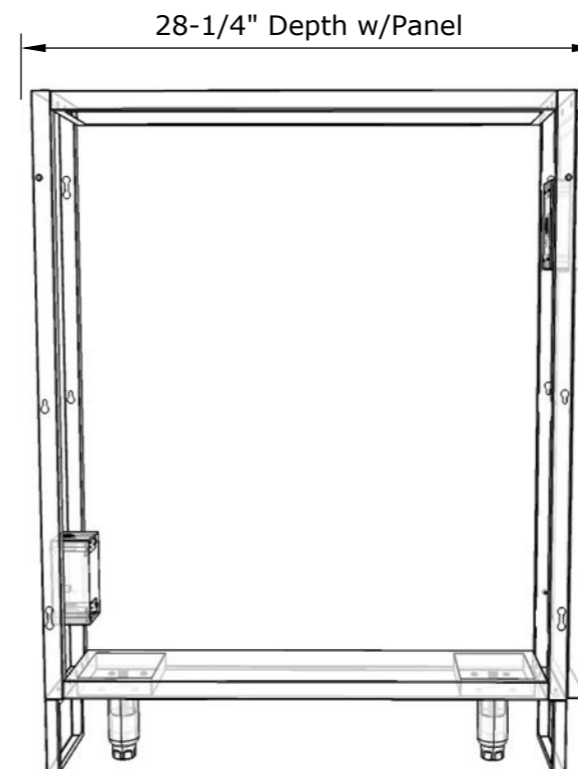
ISO VIEW



FRONT VIEW



TOP VIEW



**SUNSTONE METAL PRODUCTS**  
16004 CENTRAL COMMERCE DR.  
PFLUGERVILLE, TEXAS 78660  
Tel: 888.934.9449  
Bus: 512.487.5116  
Fax: 512.487.7016

### PRODUCT

6" Electrical Component Spacer  
Cabinet

**Item No.** SBC6SPEL

### DESCRIPTION

6" Component Spacer Cabinet w/Front Electrical  
Cover, & interior 1-Gang Box

- Lifetime Structure Warranty
- 304 Stainless Steel Structure
- Front & Back Kick-Plates
- Easy Pin-Lock Installation
- Adjustable Peg-Legs
- Optional Wheel Casters

### INCLUDED COMPONENTS

- Front Kick Plates
- Back Solid Kick Plate
- (2) Adjustable Peg Legs
- Front Electrical Cover
- Back Panel Electrical Box

### PRODUCT DIMENSIONS

6"W x 28-1/4"D (w/Panel) x 34-  
1/2"H (w/Legs) or 30-1/2"H (no  
Legs) or Upto 36" Max Adjustable  
Height

### INSERT DIMENSIONS

NONE

### INSERTABLE PRODUCTS

NONE

### MATERIAL SPECS

304 Stainless Steel entire  
structure, 18 Gauge for Door  
Panel, 18 Gauge for Cabinet  
Box, 18 Gauge for Shelf,  
Handles are made of Solid 304  
Stainless Steel Bar.