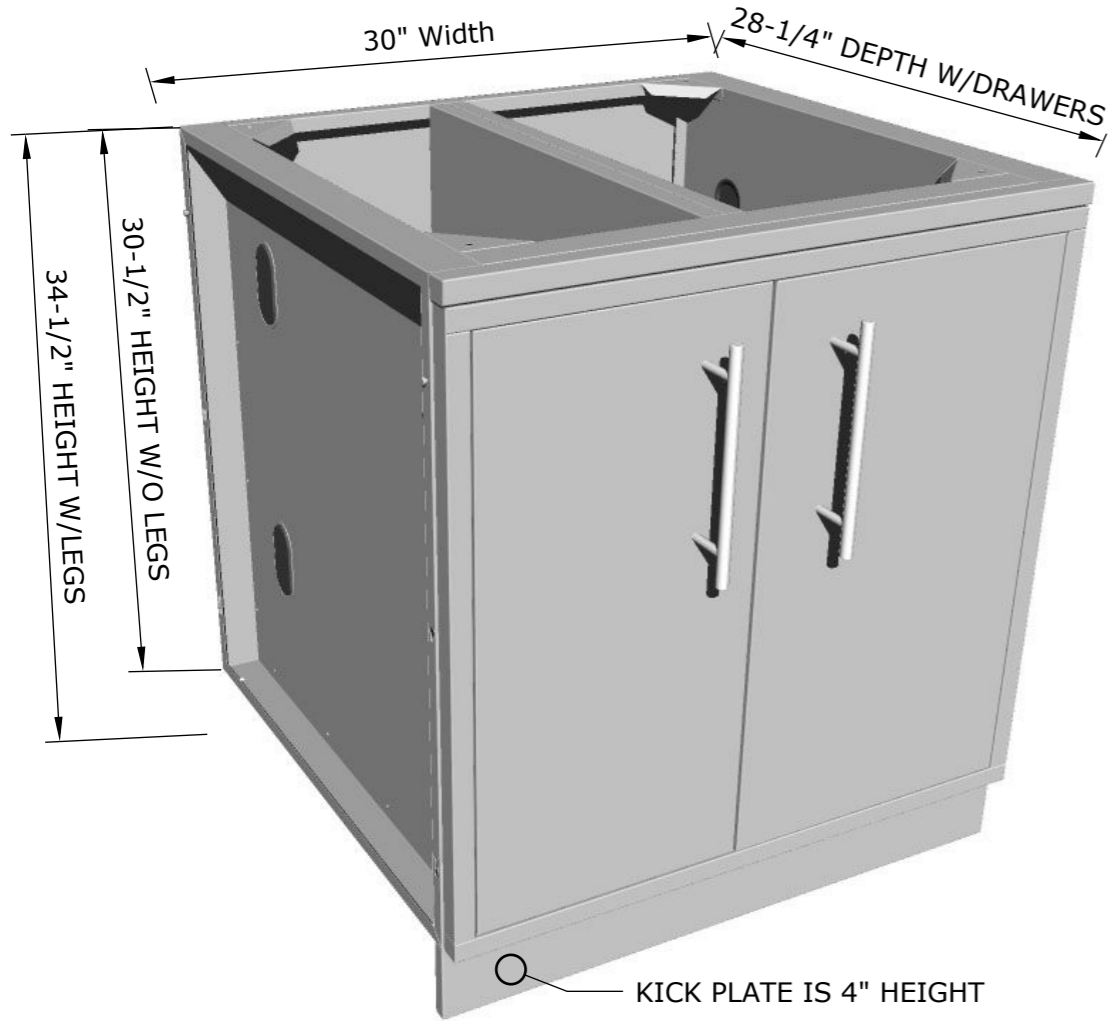
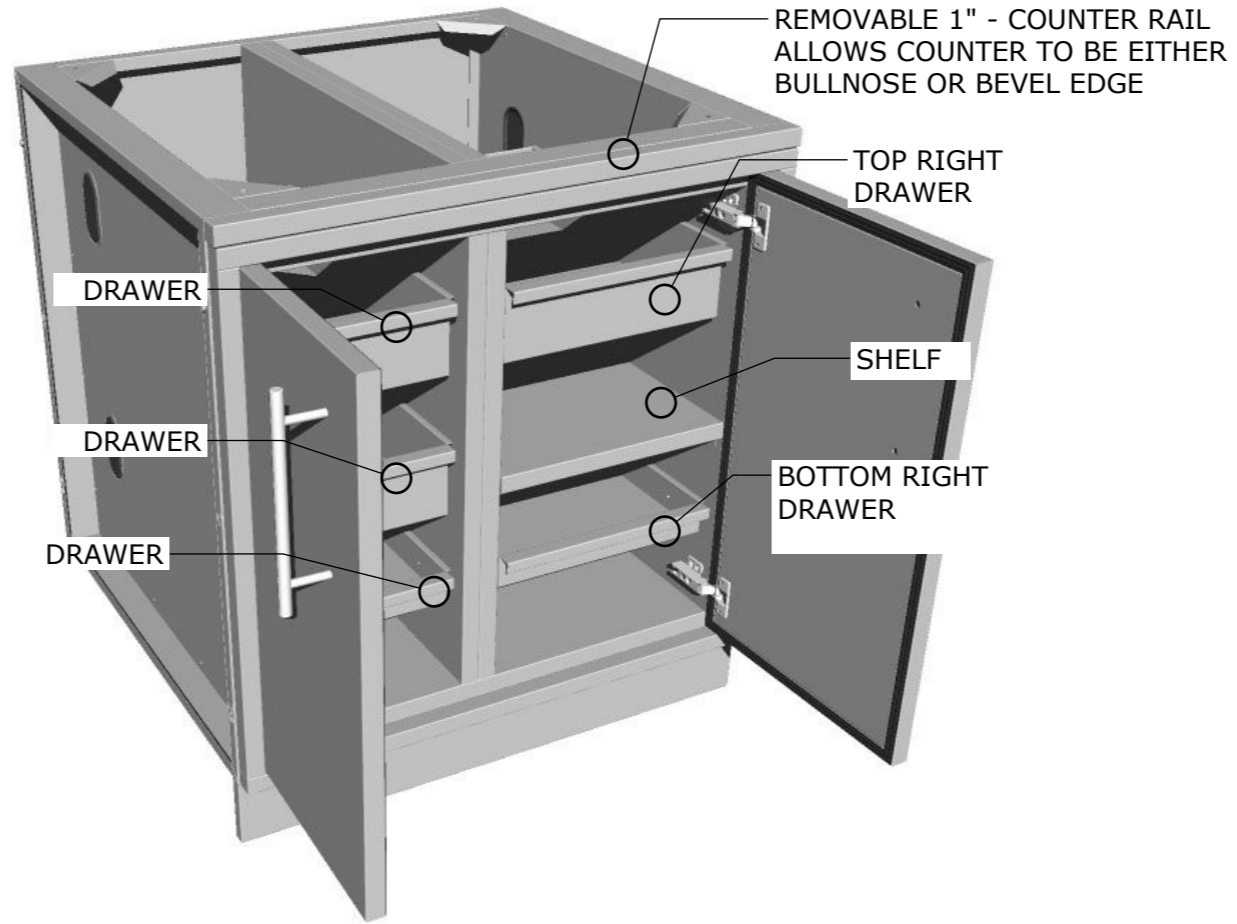


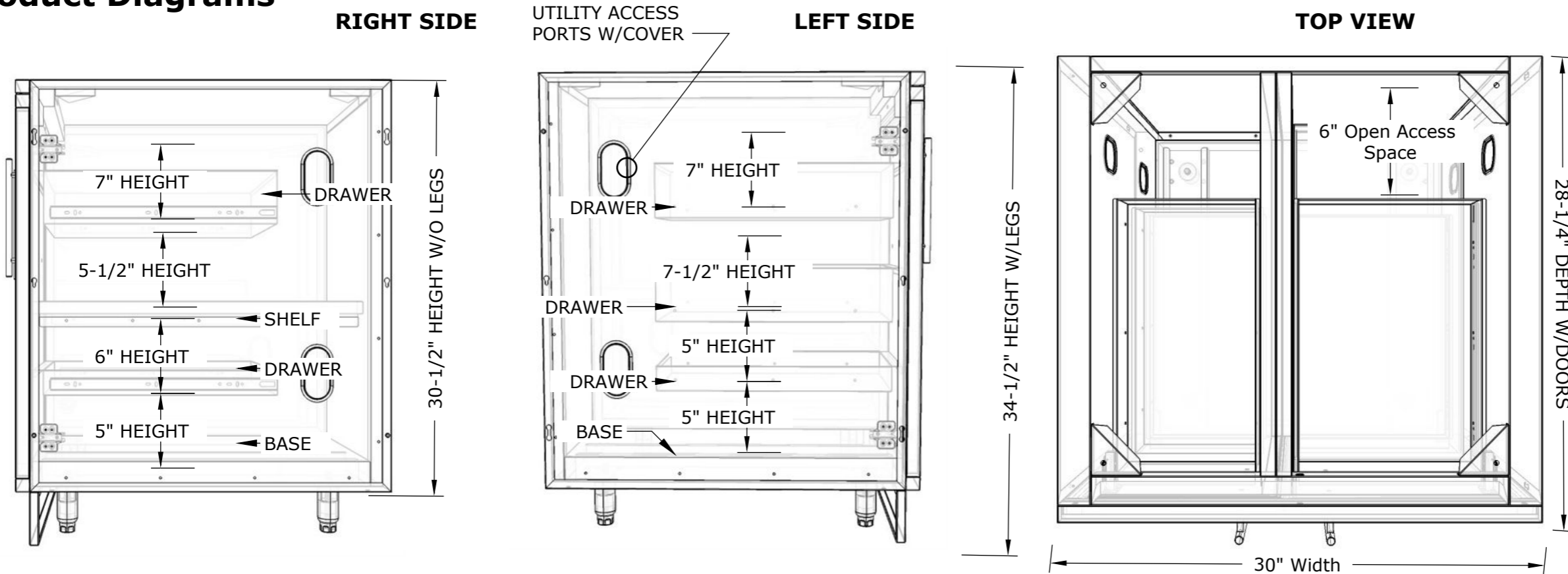
## Product Dimensions



## Product Components



## Product Diagrams



**SUNSTONE METAL PRODUCTS**  
 16004 CENTRAL COMMERCE DR.  
 PFLUGERVILLE, TEXAS 78660  
 Tel: 888.934.9449  
 Bus: 512.487.5116  
 Fax: 512.487.7016

### PRODUCT

30" Dry Storage Sealed  
 Pantry Cabinet

**Item No.** SBC30DSPC

### DESCRIPTION

30" Weather Sealed Dry Storage  
 Pantry with Multi-Drawers and  
 Shelves

- Lifetime Structure Warranty
- 304 Stainless Steel Structure
- 304 SS Rod Handles
- Front & Back Kick-Plates
- Easy Pin-Lock Installation
- Soft-Close Drawer Tracks
- Covered Access Ports
- Adjustable Peg-Legs
- Optional Wheel Casters

### INCLUDED COMPONENTS

- Front Vented Kick Plate
- Back Kick Plate
- (4) Adjustable Peg Legs
- Weather-Stripping

### PRODUCT DIMENSIONS

30"W x 28-1/4"D (w/Doors) x 34-  
 1/2"H (w/Legs) or 30-1/2"H (no  
 Legs) or Upto 36" Max Adjustable  
 Height

### INSERT DIMENSIONS

Left - 10-3/8"Width x 18"Depth  
 Right - 13-1/2"Width x 18"Depth

### INSERTABLE PRODUCTS

Single Side Burner - 1SSB

### MATERIAL SPECS

304 Stainless Steel entire  
 structure, 18 Gauge for Door  
 Panel, 18 Gauge for Cabinet  
 Box, 18 Gauge for Shelf,  
 Handles are made of Solid 304  
 Stainless Steel Bar.