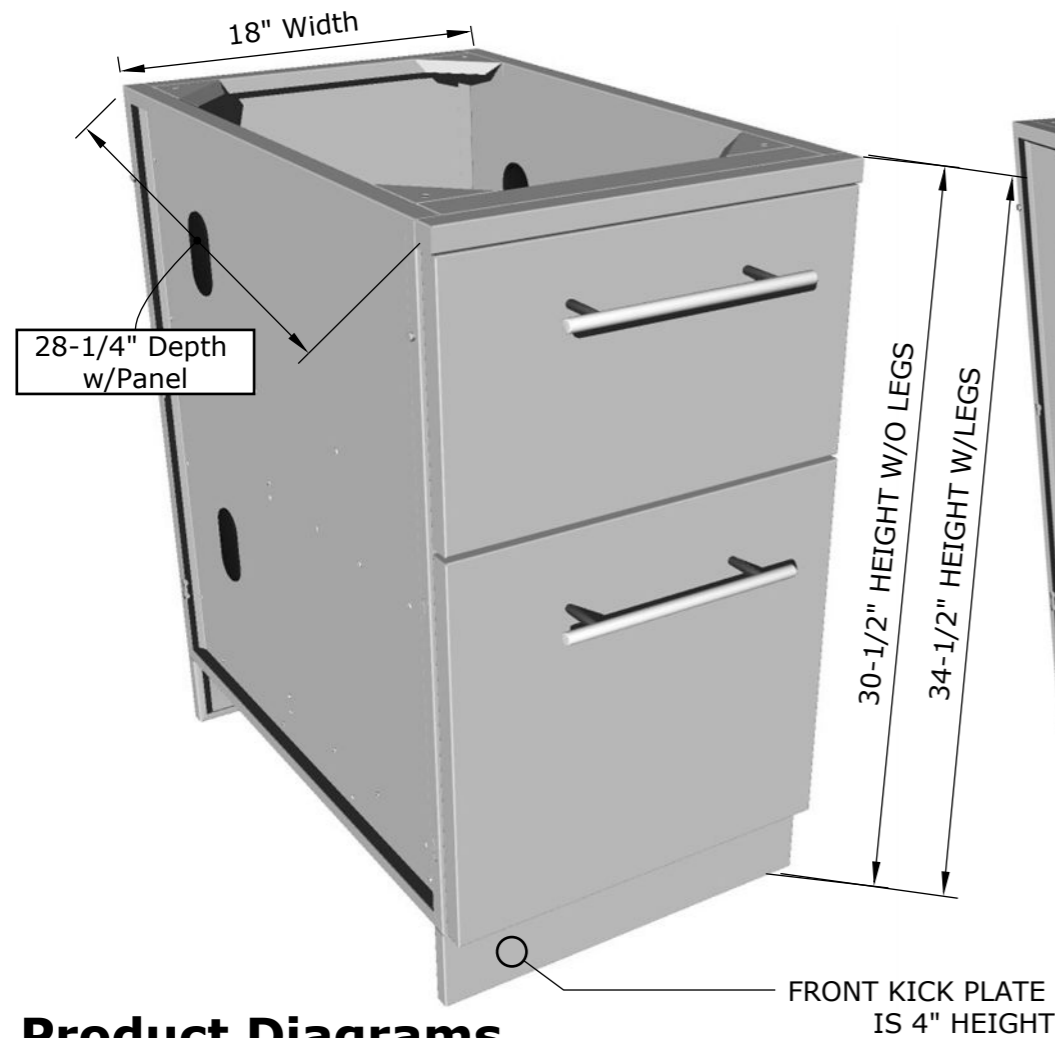
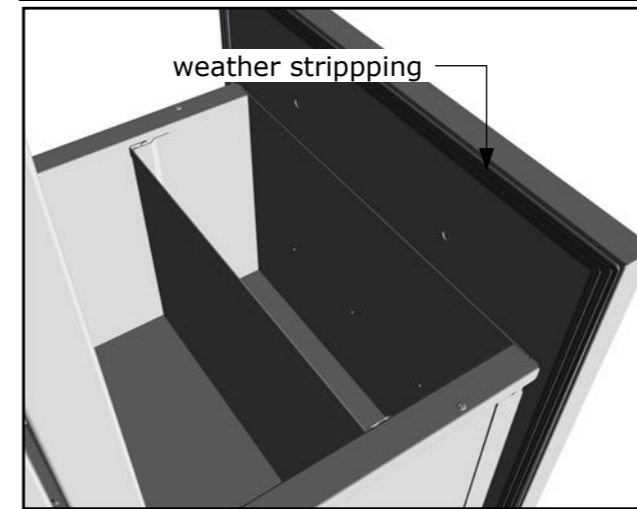
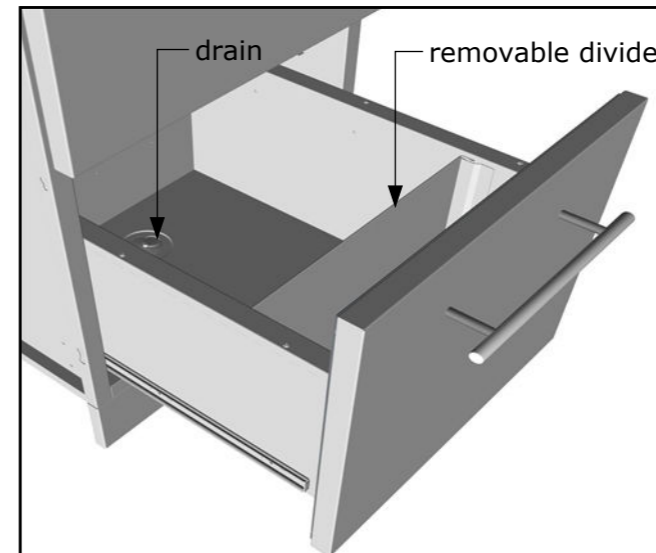


Product Dimensions



Product Configurations



SUNSTONE®

SUNSTONE METAL PRODUCTS
 16004 CENTRAL COMMERCE DR.
 PFLUGERVILLE, TEXAS 78660
 Tel: 888.934.9449

PRODUCT

18" Paper Towel/Cutlery Drawer w/Insulated Ice Chest Dry Storage Drawer
Item No. SBC18DPIC

- Lifetime Structure Warranty
- 304 Stainless Steel Structure
- Front & Back Kick-Plates
- Easy Pin-Lock Installation
- Covered Access Ports
- Adjustable Peg-Legs
- Optional Wheel Casters
- Rain Gutter on Both Drawers
- Paper Towel & Cutlery Drawer
- Weather Stripping
- Dry Storage Pantry Drawer
- Cutting Board
- Flexible Drain

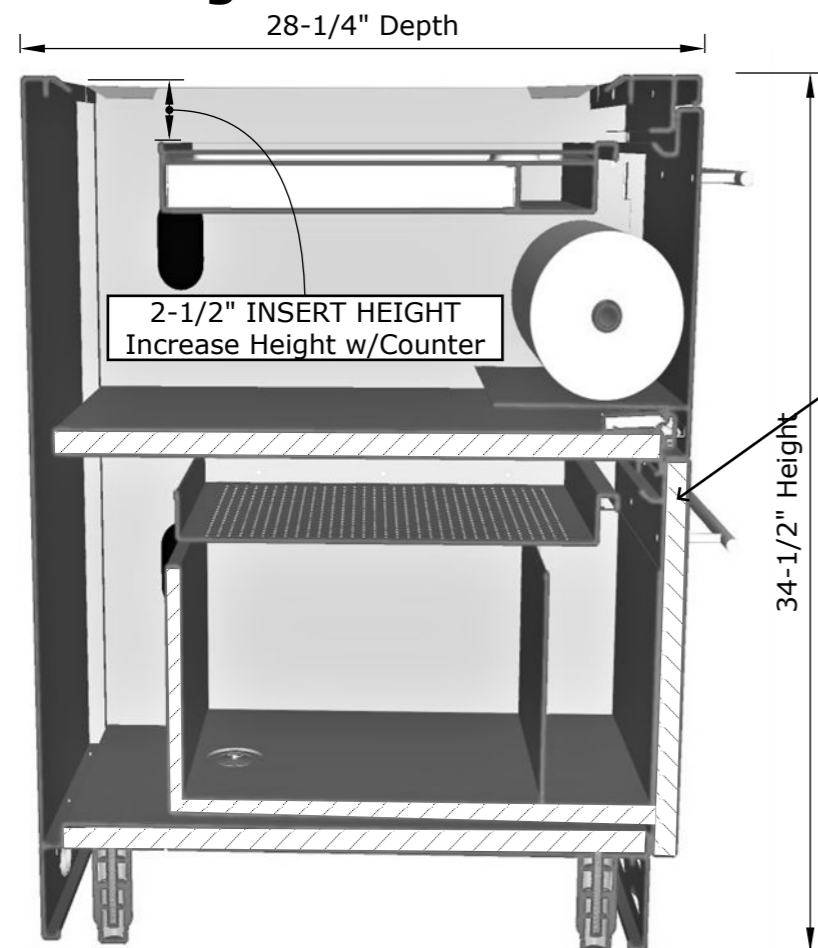
PRODUCT DIMENSIONS

18"W x 28-1/4"D (w/Doors) x 34-1/2"H (w/Legs) or 30-1/2"H (no Legs) or Upto 36" Max Adjustable Height

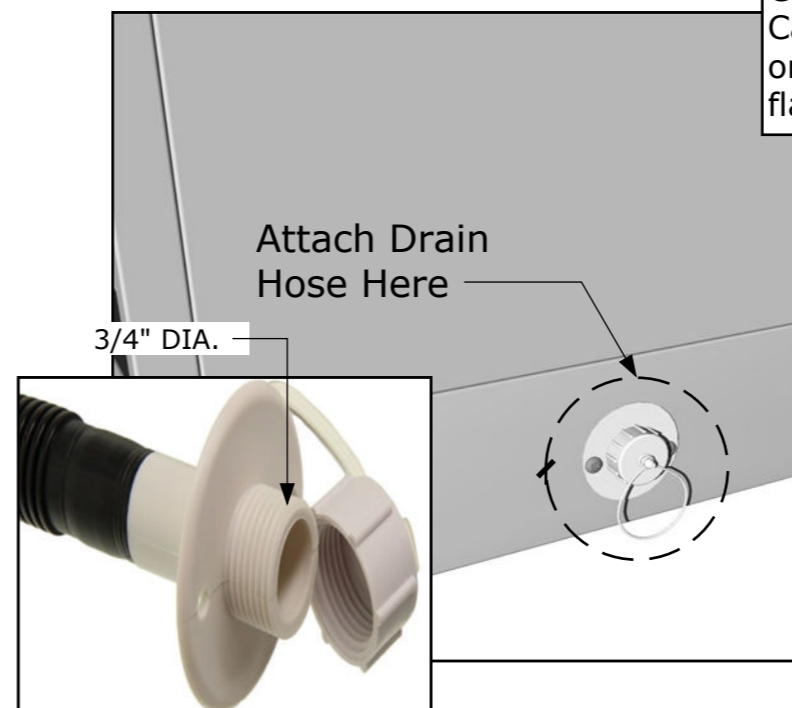
MATERIAL SPECS

304 Stainless Steel for the Entire Structure, 20 Gauge for Door Panel, 20 Gauge for Cabinet Panel, 304 SS Peg Legs, 304 SS Rod Handles

Product Diagrams



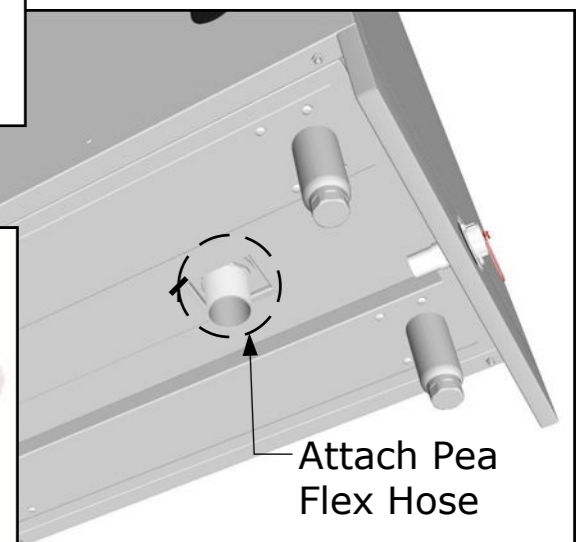
Double Walled Insulated Drawer & Lower Box



Cabinet has Bottom Drain, with Flex Hose you can attach a standard Garden Hose to outside back of Cabinet Polypropylene drain trap on one end and ABS plastic evacuation flange on the other end.



Includes 25" of 3/4" diameter hose.



ADA COMPLIANT LEGS/KICKPLATES NOT AVAILABLE ON THIS CABINET BECAUSE OF DRAIN